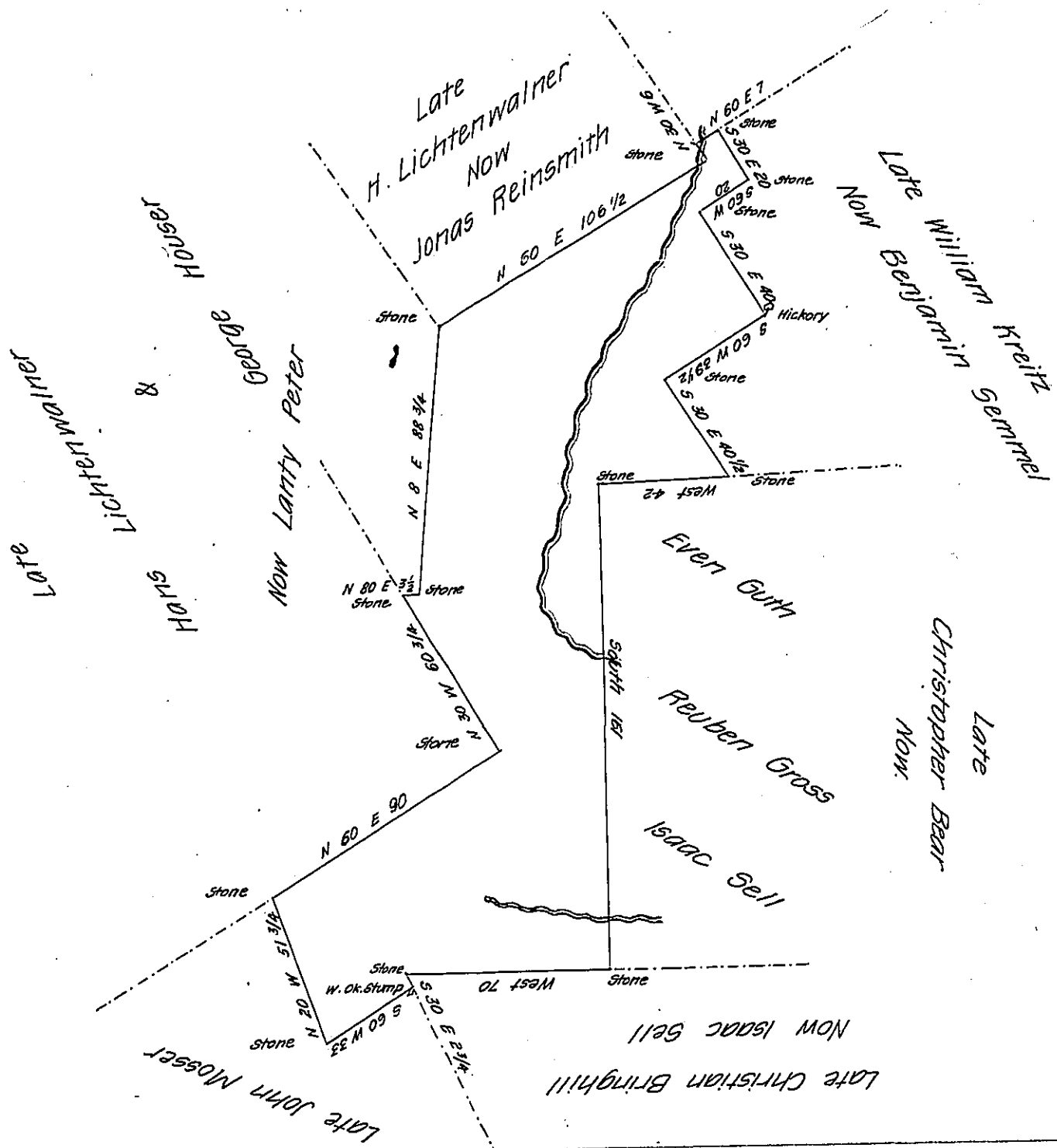


FORM No. 1.



Draft of a tract of land containing 115 Acres and 140 Perches and allowance of 6 p. of for roads &c. Situate in North Whitehall township in the County of Lehigh surveyed the 29<sup>th</sup> day of Nov. 1821 by Peter Rhoads then Dpt. Survr in pursuance of a warrant granted to Martin Samuel dated the 14<sup>th</sup> day of October 1756

I hereby certify that the foregoing is a correct copy of a survey filed amongst the records of the County Surveyor's office of this County and that it has been examined by me and found to be correct

To J. M. Campbell Esqr  
Surveyor General.

Geo. Blank C.S.

IN TESTIMONY that the above is a copy of the original remaining on file in the Department of Internal Affairs of Pennsylvania, made conformably to an Act of Assembly approved the 16th day of February 1833, I have hereunto set my hand and caused the Seal of said Department to be affixed at Harrisburg, this fourth day of March 1907

*Isaac D. Brown*  
Secretary of Internal Affairs.